



Buckinghamshire
College Group

YOUR FUTURE WORKING AT BUCKINGHAMSHIRE COLLEGE GROUP



Initial Teacher
Training



www.buckcollegegroup.ac.uk

CONTENTS



1 Principal's Welcome

PAGE 03



2 Our Executive Team

PAGE 04



3 Our College

PAGE 05



4 Our Campuses

PAGE 06



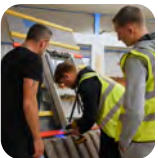
5 Vision and Values

PAGE 07



6 A Safe Place to Learn

PAGE 08



7 Our Departments

PAGE 09



8 Our Benefits

PAGE 11



9 Our Recruitment Process

PAGE 12



Welcome

I am delighted that you are considering joining our exceptional team. There has never been a better time to find your ideal role and join Bucks College Group.

This College does one of the most important jobs in the country – it genuinely transforms lives by educating and training people of all ages to help them to succeed in life and create the skills society needs. Moreover, we do it very well. We have high standards, with good success rates for students and more students joining us each year. The Bucks College Factor means that our students go further and achieve more through inspirational learning experiences that go far beyond the curriculum.

Our staff are key to securing this success. We value our staff highly and aspire to provide a diverse, supportive, open and inclusive environment where everyone can flourish and pursue their career goals.

We offer a competitive reward and benefits package and high quality continuing professional development tailored for each individual.

You may be considering a role in further education for the first time or are highly experienced in the sector and looking for your next move – regardless of your starting point, if you are ambitious, have the Bucks College Factor and want to join us on our journey to transform lives we cannot wait to hear from you. We have such a diverse range of roles across our college community and if you would like to find out more about any of them please do not hesitate to get in contact.

I wish you well with your application and look forward to seeing successful candidates at a staff induction session in the near future.

Jenny Craig
Principal / Chief Executive

Meet Our EXECUTIVE TEAM



JENNY CRAIG
PRINCIPAL AND CHIEF EXECUTIVE



JOHN MCGRATH
CHIEF OPERATING OFFICER



HANNAH JAMES
VICE PRINCIPAL
CURRICULUM AND QUALITY



TRACEY MATTHEWS
VICE PRINCIPAL
COMMERCIAL AND PARTNERSHIPS



NICKY ELLIS
ASSISTANT PRINCIPAL
STUDENT ENGAGEMENT AND
SUPPORT



OLIVER ROTH
EXECUTIVE DIRECTOR
MIS AND DIGITAL TRANSFORMATION



IAN HARPER
EXECUTIVE DIRECTOR
BUSINESS DEVELOPMENT



RUTH OSGOOD
EXECUTIVE DIRECTOR PEOPLE
AND PURPOSE

OUR COLLEGE

The Bucks College Factor

Buckinghamshire College Group is a Further Education College with three campuses located in Aylesbury, Amersham and Wycombe.

We are proud to be a skills-based college supporting over 5,000 learners each year to achieve their study and career goals and play a pivotal role in the Buckinghamshire community working with a wide range of employers for example, Digital Support & Security - Tech Support Squad, Civil Engineering - Atkins Realis, Balfour Beatty and Marketing - Madate PR, to name but a few.

As a member of our team, you will have an unwavering passion for learning and for

supporting students and staff to achieve more than they ever thought possible – while being innovative and comfortable with experimentation of new ideas and approaches including use of digital tools to enhance student engagement - we call this the Bucks College Factor!

We are Ofsted rated 'Good' across all our provision with an Outstanding Teacher Training provision. Ofsted commended the level of ambition we hold for every learner and the level of support we provide to staff.





OUR CAMPUSES

We deliver our courses from three main campuses, in Amersham, Aylesbury and High Wycombe. Each campus boasts recent investment in facilities, giving our students access to industry standard workshops, software and equipment.

AYLESBURY CAMPUS

Aylesbury campus features modern workshops and classrooms, commercial businesses including Hair and Beauty and HealthTec Thames Valley for healthcare education. The campus has specialist workshops for construction, technology, motor vehicle, brickwork, electrical and plumbing programmes, dedicated beauty salons, studios for games design, a Life Skills Centre, refectory and student gym. Located near the town centre it's a five minute walk from transport links. The curriculum spans Animal Care, Business, Construction, Computing, Health and Social Care, Hair and Beauty, Engineering, Creative Arts and more.

HIGH WYCOMBE CAMPUS

The High Wycombe campus features our Construction Skills Centre. It offers workshops for Carpentry, Motor Vehicle, Brickwork, Electrical and Plumbing. Sport students access a modern gym and FA-standard 3G football pitch. The Future Life Centre supports young adults with high needs. The campus specialises in Construction trades, Health and Social Care, Childcare, Public Services, Sport and Science and Forensics.

AMERSHAM CAMPUS

Amersham Campus provides large workshop spaces for Art students, purpose-built digital media facilities with green screen studio and Motion Capture equipment, and music facilities including recording studios and rehearsal spaces. Key areas include Art and Design, Photography, Business, Graphic Design, Media, Music, TV and Film.



OUR VISION AND VALUES



VISION

We deliver excellence in employer focused, technical, vocational and professional education improving life chances for individuals and supporting communities throughout Buckinghamshire and beyond to realise their career ambitions.

THE FOLLOWING CORE VALUES WHICH DRIVE OUR ACTIONS AND BEHAVIOURS:



AMBITION

We are highly ambitious and support everyone to achieve more than they ever thought possible.



INNOVATION

We are continuously improving and embrace the power to think differently about how we learn and work.



INTEGRITY

We operate with honesty and fairness and deliver on our promises.



RESPECT

We value diversity and the opinions and contributions of others, acting with kindness and respect for all.



A SAFE AND SUPPORTIVE PLACE TO LEARN

At Buckinghamshire College Group, your safety, wellbeing and personal development are our top priorities. We are deeply committed to providing a welcoming, inclusive, and secure environment where every member of our college community can thrive academically, socially and emotionally.

All staff at Buckinghamshire College Group are trained to recognise when a member of our college community might need extra support.

Who's Here to Help

For our students, we have a dedicated Safeguarding, Prevent and Wellbeing Team. The team support students who may be facing personal, emotional, or safety-related concerns. You'll find the student services team approachable, understanding, and ready to help. We work closely with parents, carers, and local services to ensure everyone feels safe, supported, and valued.

For our staff, we have a dedicated, friendly and approachable Human Resources team who you can speak to anytime if you have any questions or concerns about yourself or someone else.

We also have the Health Hero which is a confidential counselling and information service available 24/7 to assist you with personal or work-related problems that may be affecting your health, wellbeing or performance. This is free of charge and can help with a wide range of concerns for example:

- Counselling and emotional support
- Debt counselling
- Legal guidance
- Health and wellbeing information
- Family care information
- Financial and tax information

Your Voice Matters

We believe in empowering our college community to speak up, seek help, and support one another. Buckinghamshire College Group is a college community where everyone looks out for each other, and where your voice will always be heard and respected.



DISCOVER OUR DEPARTMENTS

Join a team that helps students go *Beyond Ambition*

Our academic teams are at the heart of the student journey. Working closely with employers, they ensure that what we teach meets the needs of modern industry and real-world success.

Creative Industries

In partnership with Creative Media Skills at Pinewood Studios, our Creative team brings industry insight and inspiration to the next generation of media professionals.

Health & Social Care & Childcare

Our department offers pathways into healthcare, including the highly respected Nurse Cadet Programme with the NHS.

Engineering & Construction

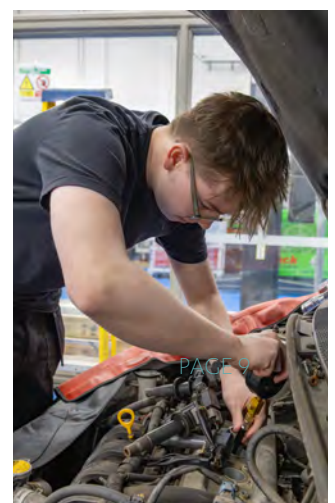
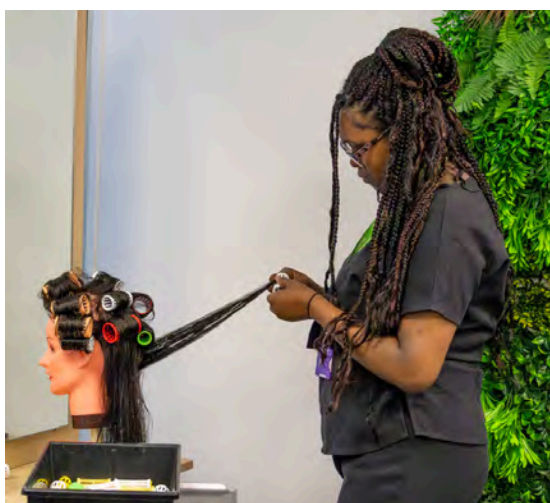
Our students train in purpose-built facilities that mirror real-world environments ideal for preparing them for apprenticeships or employment in high-demand trades.

Maths & English

Essential to all students' success, our Maths and English departments support learners in building the core skills they need for everyday life and their chosen career paths. Whether helping students achieve functional skills, GCSEs or higher qualifications, the team ensures personalised, engaging learning that boosts confidence and competence.

Business and Digital

This department develops confident, workplace-ready individuals, covering topics from entrepreneurship to digital marketing.





Service Industries

Including Hair and Beauty our staff work closely with students to build customer-facing and professional skills.

Sport & Public Services

Inspiring physical confidence, discipline and teamwork, from aspiring athletes to future emergency service personnel.

Inclusive Practice

Supporting learners with additional needs, we ensure all students can access, enjoy and succeed in education.

Apprenticeships

As Buckinghamshire's biggest provider of Apprenticeships, our dedicated teams work with employers across industries to offer valuable, real-world experiences in:

- Business Administration
- Construction Trades
- Engineering and Manufacturing
- Healthcare Support
- Digital and IT Services

Student Support Services

Our pastoral and support teams are essential to student wellbeing and success. From mental health services and safeguarding to careers advice and financial support, our students flourish because of the people who support them every step of the way.

Business Support

It takes more than teachers to run a college group. Our central services provide the foundation that helps our students and our people thrive:

- Marketing and Communications
- Finance and HR
- IT and Digital Services
- Estates and Facilities
- Admissions and Management Information Services
- Nursery

At Buckinghamshire College Group, we're proud of our partnerships, our facilities, and most of all, our people.



OUR BENEFITS

As a caring employer, Buckinghamshire College Group offers a wide range of benefits to staff. We work closely with a range of staff forums to regularly review and update these benefits. Current benefits offered to staff include:



PENSIONS



**FLEXIBLE WORKING
OPTIONS**



**GENEROUS HOLIDAY
ALLOWANCE**



FREE CAR PARKING



**PROFESSIONAL
DEVELOPMENT**



**EYE TESTS AND
CONTRIBUTION TO GLASSES**



**SUBSIDISED ON
SITE NURSERY**



**USE OF DANCE STUDIO
AND SPORTS HALL**



**DISCOUNTED HAIR AND
BEAUTY TREATMENTS**



**STAFF DEVELOPMENT
OPPORTUNITIES**



**EMPLOYEE ASSISTANCE
PROGRAMME**



**OCCUPATIONAL
HEALTH SERVICE**



**STAFF ACHIEVEMENT
AWARDS AND CEREMONY**



**EMPLOYEE OF THE
MONTH SCHEME**



**USE OF THE LEARNING
CENTRE RESOURCES**



**ONSITE FOOD AND
DRINKS OUTLETS**

OUR RECRUITMENT PROCESS

STEP 01

Application

Online application to be completed by candidates: [Job Search](#)

STEP 02

Shortlisting

Shortlisted candidates will be invited for interview allowing 5 working days' notice.

STEP 03

Interview Process

The Interview process will consist of a formal interview, microteach for lecturing candidates, presentation, task and tour of the college

STEP 04

Successful Candidates

Following the interview successful candidates will receive a verbal offer from the recruiting manager

STEP 05

Feedback

Unsuccessful candidates can request feedback

STEP 06

Onboarding

The appointed candidate will be sent a welcome email detailing the next steps. Candidates to provide reference consent at this point.



Ready to make a difference?



www.buckscollegigroup.ac.uk



**Buckinghamshire
College Group**